

# visia motion tracker

**Visia Motion Tracker** is the server based video analytics software of the Visia Platform. This component, to be installed on "dedicated" hardware, can analyse "via network" videos originating from analog video sources connected to the Visia DVR. It can also analyse video from both network devices of several vendors (1) and main video management systems.

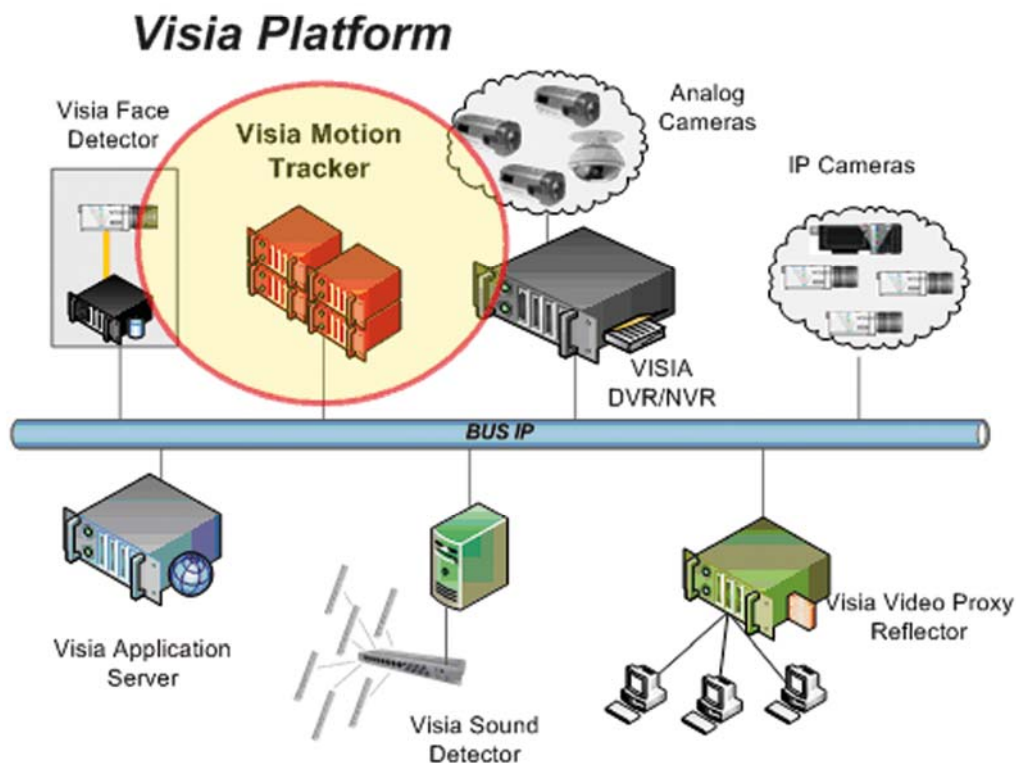
Thanks to a user-friendly web interface, it is possible to set up a wide range of parameters, depending on the location to be surveilled.

## Visia Motion Tracker

The Visia Motion Tracker software makes available the operation of smart videosurveillance

based on image analysis techniques and artificial intelligence which consent to detect and automatically classify objects and/or persons in the visualised scene as well as to track the motion trajectory.

The image processing, through the Nexera Computer Vision algorithms, allows recognition of anomalous situations as well as contextual generation of several data which describe the visualised scene. In this way, the system is able to automatically check predefined alarm conditions and send alerts to videosurveillance control personnel.

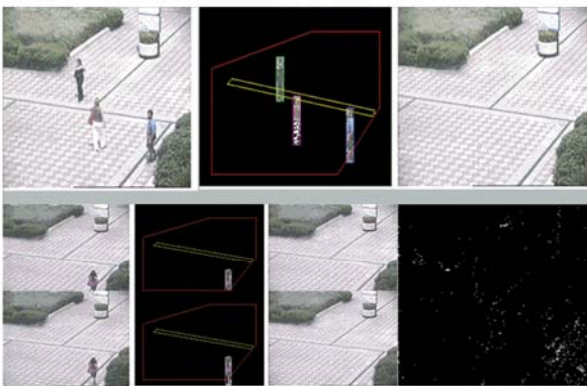


(1) To verify a full compatibility list: [info@nexera.it](mailto:info@nexera.it)

## Our Two System Modalities:

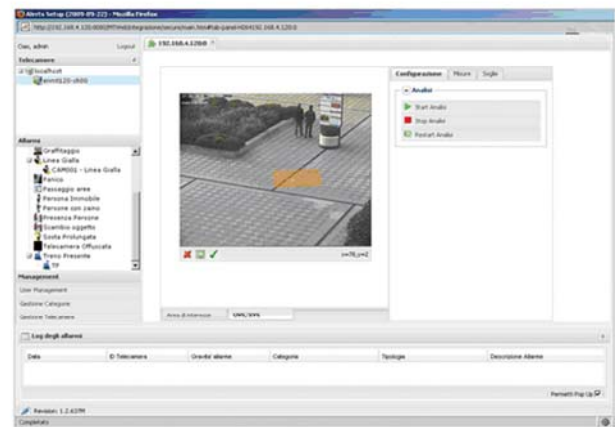
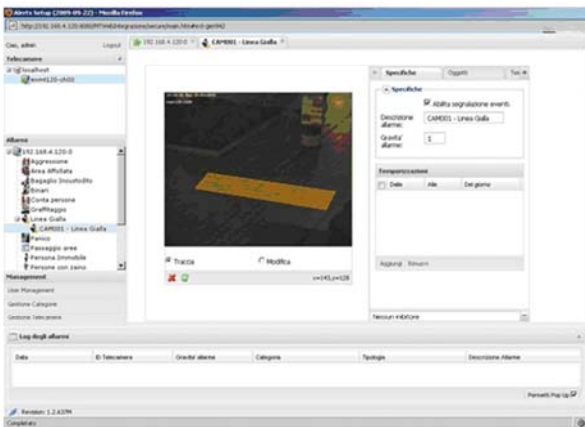
**Basic** – Detection of persons and/or objects in a videosurveilled area.

Upon the detection of movement in the visualised scene, the system automatically measures the size, in metres, of the object in the interested area. In this way it is able to distinguish among a person, an animal or a vehicle. Sophisticated algorithmic brightness controls make the system extremely resistant for use in outdoor locations.



**Advanced** – with this configuration the system is able to recognize various alarm event scenarios, including:

- **Unattended Baggage:** an alarm is generated as soon as in an area predefined as “unattended baggage area”, an object is detected with no person in the immediate vicinity of said object for a period of time exceeding a given threshold.
- **Direction Flow:** an alarm is generated as soon as an exit-only or entrance-only point is crossed in a given direction.
- **Line Crossing:** an alarm is generated as soon as a person walks across a configured “Line Area”.
- **Crowd Detection:** an alarm is generated as soon as a number of persons exceeding a defined threshold is detected in an area.
- **Standing Person:** an alarm is generated as soon as a person is detected to be standing perfectly still for a time period exceeding a given threshold.
- **Waiting Person:** an alarm is generated as soon as a person is detected waiting in an area for a time period exceeding a given threshold.



Visia Motion Tracker is a software equipped with a SOA-compliant integration profile. In this way it can be easily inserted in software projects managed by system integrators.

All the computer vision algorithms used by the Visia Motion Tracker have been developed in the R&D Laboratories of Nexera.

Nexera expertise and experience in complex computer vision technologies can help organizations to develop custom solutions.